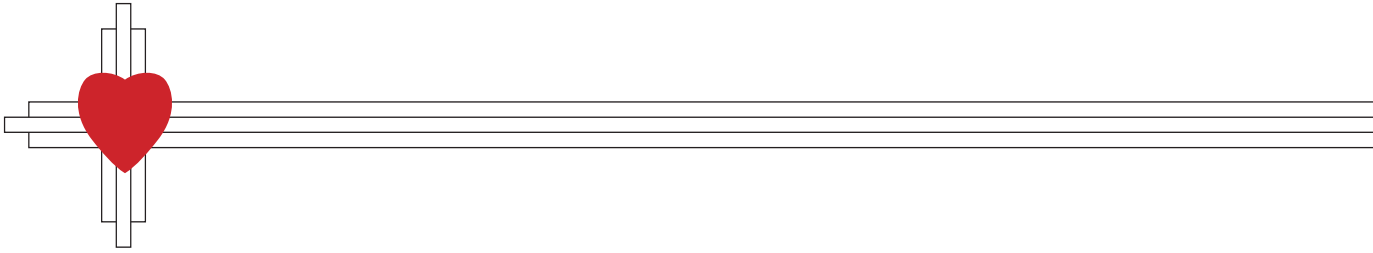


**Partnership for a Healthy Torrance County**

**Estancia Valley Area Service Directory**

**March 2009**



## **Alphabetic Index of Providers**

## March 2009 Service Directory

## ALPHABETICAL INDEX

Provider Name	Service Category	Phone	City	Page(s)
7th Judicial District Court	Judicial	384-2974	Estancia	12
AA Alcoholics Anonymous	Support Groups	266-1900	Estancia	23
AA Assistance	Support Groups	266-1900		24
AA Came to Believe	Support Groups	266-1900	Estancia	24
AA Cedar Crest	Support Groups	266-1900	Cedar Crest	24
AA Edgewood Valley Group	Support Groups	266-1900	Edgewood	24
AA Estancia Valley Group	Support Groups	266-1900	Moriarty	24
AA McIntosh Group	Support Groups	266-1900	McIntosh	24
AA Mountainair Group	Support Groups	266-1900	Mountainair	24
AA New Beginnings	Support Groups	266-1900	Estancia	24
AA Old 66 Group	Support Groups	266-1900	Edgewood	25
AA Spanish Group	Support Groups	266-3688 (Spanish)	Estancia	25
AA Tijeras High Country Group	Support Groups	266-1900	Tijeras	25
AA Valley Girls (women only)	Support Groups	266-1900	Estancia	25
Above All Personal Care Services, LLC	Home Health	832-5553	Moriarty	11
Access2Care	Transportation - Medical	1-888-939-2273		28
Active Solutions	Physical Therapy	286-7838	Edgewood	16
Adult Probation and Parole	Law Enforcement	832-6832	Moriarty	13
Adult Protective Services	Abuse and Neglect	505-476-4912		1
Aging and Disability Resource Center	Aging and Disability	505-476-4710	Santa Fe	2
Al-Anon Fix On Route 66 AF Group	Support Groups	281-2013	Edgewood	25
Al-Anon High Country AF Group	Support Groups	262-2177	Cedar Crest	25
Al-Anon How It Works AF Group	Support Groups	281-5117	Cedar Crest	25
Alateen	Support Groups	262-2177	Albuquerque	25
All Faiths Receiving Home	Abuse and Neglect	271-0329	Albuquerque	1
All Faiths Receiving Home	Pregnancy & Parenting	271-0329	Albuquerque	17
Alta Mira Specialized Family Services	Child Development	384-0894	Estancia	6
Alta Mira Specialized Family Services	Disability Agencies	384-0894	Estancia	9
Amigas de La Familia	Abuse and Neglect	832-0332	Moriarty	1
Bethel Community Storehouse	Assistance	832-6642	Moriarty	2
Care Net East Mountain Pregnancy Center	Pregnancy & Parenting	281-5408	Edgewood	17
CASA - Court Appointed Special Advocates	Abuse and Neglect	832-4217	Moriarty	1

Cedar Crest Vision	Vision	286-0300	Cedar Crest	29
Children, Youth and Families Department	Abuse and Neglect	384-2745	Estancia	1
Children, Youth and Families Department	Judicial	384-2780	Estancia	12
Children, Youth and Families Department	Abuse and Neglect	1-800-432-2075	Albuquerque	1
Cocaine Anonymous	Support Groups	291-3888		26
Conflict Management, Inc.	Counseling / Psychiatric Services	884-9411	Albuquerque	7
Cooperative Extension Services	Agriculture	246-4745	Estancia	2
CYFD Child Care Services Bureau	Child Care Providers	505-841-4813		5
CYFD Underage Drinking Initiative	Law Enforcement	832-4406	Moriarty	13
Division of Vocational Rehabilitation	Disability Agencies	832-5038	Moriarty	10
Dr. David Stevens	Dental	832-5556	Moriarty	9
Drug Free TRES Program	Teens & Youth	832-4471	Moriarty	27
DWI Memorial of Perpetual Tears	Substance Abuse Prevention Programs	832-4495	Moriarty	23
Eagles Wings Youth Ranch	Teens & Youth	847-0062	Mountainair	27
Earthchild	Child Development	281-2878	Edgewood	6
East Mountain Eye Clinic	Vision	286-2020	Edgewood	29
East Mountain High School	Schools	281-7400	Sandia Park	19
East Mountain Library	Libraries	281-8508	Tijeras	14
East Mountain Orthodontics	Dental	286-1193	Edgewood	9
East Mountain Pantry	Assistance - Food	281-3342	Tijeras	3
East Mountain Physical Therapy	Physical Therapy	832-4011	Moriarty	16
East Mountain Physical Therapy	Physical Therapy	281-8463	Edgewood	16
East Mountain Physical Therapy	Physical Therapy	286-3678	Cedar Crest	16
Echo CSFP Program	Assistance - Food	242-6777	Estancia	3
Eden Birth & Wellness	Childbirth	281-1151	Edgewood	7
Edgewood Christian School	Schools	281-5091	Edgewood	19
Edgewood Community Library	Libraries	281-0138	Edgewood	14
Edgewood Elementary School	Schools	832-5740	Edgewood	20
Edgewood Family Dentistry	Dental	281-0373	Edgewood	9
Edgewood Middle School	Schools	832-5880	Edgewood	20
Edgewood Pediatric Clinic	Primary Care	281-4620	Edgewood	17
Edgewood Police Dept	Law Enforcement	281-1060	Edgewood	13
Edgewood Senior Center	Senior Services	281-2515	Edgewood	22
Enchantment Legacy, Inc.	Aging and Disability	384-3032/ 2745	Estancia	2
Estancia High School	Schools	384-2002	Estancia	20

Estancia Lower Elementary School	Schools	384-2005	Estancia	20
Estancia Magistrate Court	Judicial	384-2926	Estancia	12
Estancia Middle School	Schools	384-2003	Estancia	20
Estancia Municipal Court	Judicial	384-0512	Estancia	12
Estancia Municipal School District	Schools	384-2000	Estancia	20
Estancia Police Department	Law Enforcement	384-4282	Estancia	13
Estancia Public Library	Libraries	384-9655	Estancia	14
Estancia Senior Center	Senior Services	384-5010	Estancia	22
Estancia Teens Need Teens (TNT)	Teens & Youth	384-2003	Estancia	27
Estancia TOP	Teens & Youth	384-1092	Estancia	27
Estancia Upper Elementary School	Schools	384-2004	Estancia	20
Estancia Valley Learning Center	Schools	384-2002	Estancia	20
EVRAS - Estancia Valley Regional Animal Shelter	Assistance	832-9597	Moriarty	2
First Choice Community Healthcare	Primary Care	281-3406	Edgewood	17
First Choice Community Healthcare	Dental	281-3406	Edgewood	9
Forest Guild YCC Summer Youth Employment	Work Programs	847-2990	Mountainair	30
Forest Guild YCC Summer Youth Employment	Work Programs	847-2211	Mountainair	30
Gamblers Anonymous	Support Groups	260-7272		26
Head Start - Admin Office & Estancia Center	Child Development	384-2302	Estancia	6
Head Start - Moriarty Center	Child Development	832-2588	Moriarty	6
Head Start - Mountainair Center	Child Development	847-0547	Mountainair	6
Hogares Inc.	Counseling / Psychiatric Services	832-9322	Moriarty	7
Hope Now	Assistance - Financial	1-888-995-4673		3
Housing and Urban Development (HUD)	Assistance - Housing	847-2416	Mountainair	4
Independent Living Resource Center (ILRC)	Disability Agencies	832-1128	Moriarty	10
Indigent Funds	Assistance - Medical	249-4756	Estancia	4
Integrated Transportation Management (ITM)	Transportation - Medical	1-888-593-2052	Mesa	28
Jelly Bean Junction	Child Care Providers	832-6458	Moriarty	5
Julian F. Rowe, MD, MPH, FACOG	Obstetrics/ Gynecology	286-1900	Edgewood	15
Liberty Ranch School	Schools	384-2530	Estancia	21
Life Directions Counseling	Counseling / Psychiatric Services	934-0603	Moriarty	7
LIHEAP	Assistance - Utilities	832-5026	Moriarty	5
Loaves and Fishes	Assistance - Food	379-7703	Edgewood	4
Logisticare	Transportation - Medical	1-866-913-4346	Phoenix	28
Loving Arms Day Care	Child Care Providers	281-8992	Edgewood	5

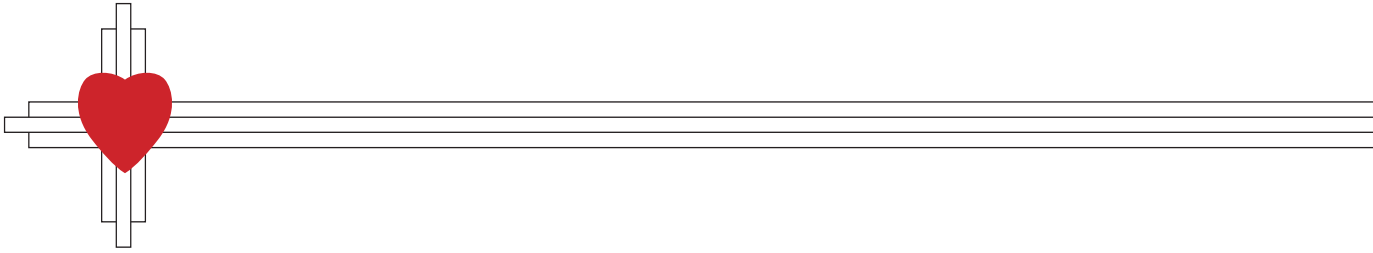
May's Pharmacy	Pharmacy	832-9988	Moriarty	15
McIntosh Senior Center	Senior Services	384-3064	McIntosh	23
McKee Counseling Services	Counseling/ Psychiatric Services	505-407-6489	Moriarty	9
McLeod Medical Center	Primary Care	832-4434	Moriarty	18
McLeod Medical Center	Primary Care	286-2396	Edgewood	18
McLeod Medical Center	Primary Care	505-281-2460	Cedar Crest	18
MedBank	Assistance - Medical	1-800-432-2080	Santa Fe	4
Morgan Oriental Medicine	Acupuncture	281-9555	Edgewood	1
Moriarty Church of Nazarene	Assistance - Food	832-4390	Moriarty	4
Moriarty Community Library	Libraries	832-2513	Moriarty	14
Moriarty Elementary School	Schools	832-4927	Moriarty	21
Moriarty High School	Schools	832-4254	Moriarty	21
Moriarty Magistrate Court	Judicial	832-4476	Moriarty	12
Moriarty Middle School	Schools	832-6200	Moriarty	21
Moriarty Municipal Court	Judicial	832-6354	Moriarty	12
Moriarty Municipal School District	Schools	832-4471	Moriarty	21
Moriarty Police Department	Law Enforcement	832-6060	Moriarty	13
Moriarty Senior Center	Senior Services	832-4425	Moriarty	23
Mountain Chiropractic & Kinesiology	Chiropractic	281-9090	Cedar Crest	7
Mountain Community Counseling	Counseling / Psychiatric Services	281-9542	Cedar Crest	7
Mountainair Christian Alliance	Assistance	847-2773	Mountainair	2
Mountainair Elementary School	Schools	847-2231	Mountainair	21
Mountainair High School	Schools	847-2211	Mountainair	21
Mountainair Library	Libraries	847-9676	Mountainair	14
Mountainair Meds and More	Pharmacy	847-0242	Mountainair	15
Mountainair Police Department	Law Enforcement	847-2806	Mountainair	13
Mountainair School District	Schools	847-2333	Mountainair	21
Mountainair Senior Center	Senior Services	847-2885	Mountainair	23
Mountainview Elementary School	Schools	832-6827	Moriarty	21
Mustang Health Center	Primary Care	847-2211 x1019	Mountainair	18
Mustang Health Center	Counseling / Psychiatric Services	847-2211 x1019	Mountainair	8
Narcotics Anonymous	Support Groups	260-9889		26
Narcotics Anonymous Last Rights Group	Support Groups	260-9889	Moriarty	26
New Beginnings	Disability Agencies	384-1045	Estancia	10
New Beginnings Christian Academy	Schools	847-2773	Mountainair	22

New Mexico Kids	Child Development	1-800-691-9067	Albuquerque	6
New Mexico State Police	Assistance	281-0096	Moriarty	3
NM Aging and Long Term Services	Aging and Disability	222-4500	Albuquerque	2
NM Department of Human Services	Income Support & Medicaid Assistance	832-5026	Moriarty	11
NM Primary Care & Midwifery Services Inc.	Primary Care	286-3100	Edgewood	18
Nurse Advice Line	Primary Care	1-877-725-2552		18
Open Hands	Assistance	505-428-2320	Santa Fe	3
Open Hands	Assistance - Utilities	505-428-2320	Santa Fe	5
Overeaters Anonymous	Support Groups	292-9080	Rio Rancho	26
Partnership for a Healthy Torrance County	Support Programs	832-0332	Moriarty	26
Plants of Thanksgiving	Education - Vocational	350-0595	Edgewood	11
PMS Esperanza Medical Center	Counseling / Psychiatric Services	384-2777	Estancia	8
PMS Esperanza Medical Center	Dental	384-2777	Estancia	9
PMS Esperanza Medical Center	Primary Care	384-2777	Estancia	18
PMS Mountainair Family Health Center	Counseling / Psychiatric Services	847-2271	Mountainair	8
PMS Mountainair Family Health Center	Primary Care	847-2271	Mountainair	18
Prince of Peace Lutheran School	Schools	281-6833	Cedar Crest	22
Protection & Advocacy	Disability Agencies	256-3100	Albuquerque	10
Read "Write" Adult Literacy Program	Literacy Programs	832-9469	Moriarty	14
Route 66 Elementary School	Schools	832-5760	Edgewood	22
Safe Ride	Transportation - Medical	1-800-797-7433	Albuquerque	29
Sanctuary Zone	Domestic Violence	384-0381	Estancia	10
Santa Fe County 4-H Clubs	Teens & Youth	1-505-471-4711	Santa Fe	27
Schools to Career / Work Program	Teens & Youth	384-2002	Estancia	27
Seibert Chiropractic	Chiropractic	505-286-2861	Cedar Crest	7
Sky Dancer Montessori School	Child Development	286-4077	Edgewood	6
Skyline Therapy Services	Physical Therapy	281-1811	Edgewood	16
Smart Choice Ride	Public Transportation	505-705-0332		29
Smith's Pharmacy	Pharmacy	286-9040	Edgewood	16
South Mountain Elementary School	Schools	832-5700	Edgewood	22
St. Vincent de Paul Society	Assistance	832-6655	Moriarty	3
St. Vincent de Paul Society	Assistance - Food	832-6655	Moriarty	4
St. Vincent de Paul Society	Assistance	281-2297	Tijeras	3
St. Vincent de Paul Society	Assistance	847-0167	Mountainair	3
Step-Up Child Care	Child Care Providers	286-4749	Tijeras	5

Su Vida Services	Disability Agencies	830-6045	Albuquerque	10
Substance Abuse Prevention Task Force	Substance Abuse Prevention Programs	832-0332	Moriarty	23
SunRise Counseling Services	Counseling / Psychiatric Services	505-891-1001	Edgewood	8
Superior Medical Transportation	Transportation - Medical	1-877-735-0111	Albuquerque	29
Talking Talons Youth Leadership Program	Teens & Youth	604-0098	Tijeras	28
TCPO TO GO Transportation	Transportation - Medical	832-0332	Moriarty	29
TCPO TO GO Transportation	Transportation - Public	832-0332	Moriarty	29
The Loft Teen Ministry	Teens & Youth	832-6385	Moriarty	28
Torrance County 4-H Clubs	Teens & Youth	246-4745	Estancia	28
Torrance County Counseling	Counseling / Psychiatric Services	832-9135	Moriarty	8
Torrance County Detention Facility	Law Enforcement	384-2711	Estancia	13
Torrance County Dispatch	Emergency Services	384-9631	McIntosh	11
Torrance County District Attorney	Judicial	384-2800	Estancia	12
Torrance County Domestic Violence Program	Domestic Violence	832-6567	Moriarty	10
Torrance County DWI Program	Substance Abuse Prevention Programs	246-4774	Estancia	23
Torrance County Emergency Manager	Emergency Services	246-4748	Estancia	11
Torrance County Project Office	Medicaid Assistance	832-0332	Moriarty	14
Torrance County Project Office	Pregnancy & Parenting	832-0332	Moriarty	17
Torrance County Project Office	Support Programs	832-0332	Moriarty	27
Torrance County Project Office Outreach	Medicaid Assistance	832-0332	Mountainair	14
Torrance County Public Health - Estancia	Public Health	384-2351	Estancia	19
Torrance County Public Health - Estancia	Pregnancy	384-2351	Estancia	17
Torrance County Public Health - Moriarty	Public Health	832-6782	Moriarty	19
Torrance County Public Health - Moriarty	Pregnancy	832-6782	Moriarty	17
Torrance County Sheriff	Law Enforcement	246-4773	Estancia	13
Torrance County Teen Court	Teens & Youth	832-4424	Moriarty	28
Torrance Works Career Center	Work Programs	832-5640	Moriarty	30
Trish Daino, Private Therapist	Counseling / Psychiatric Services	803-7110		8
Trish Daino, Private Therapist	Domestic Violence	803-7110		10
University of New Mexico	Education - Advisement	832-6774	Moriarty	11
UNM Hospital Financial Services	Assistance - Medical	272-2521	Albuquerque	4
Valencia Counseling Services	Counseling / Psychiatric Services	384-0220	Estancia	8
Van Stone Elementary School	Schools	384-2005	Estancia	22
Vital Statistics	Support Programs	505-827-0121	Santa Fe	27
Walgreens Pharmacy	Pharmacy	281-0178	Edgewood	16



Walmart Eye Center	Vision	286-3043	Edgewood	29
Walmart Pharmacy	Pharmacy	286-3043	Edgewood	16
Weight Watchers	Support Groups	1-800-651-6000	Moriarty	26
Weight Watchers	Support Groups	1-800-651-6000	Estancia	26
WIC - Torrance County Public Health - Estancia	Nutrition	384-2351	Estancia	15
WIC - Torrance County Public Health - Moriarty	Nutrition	832-6782	Moriarty	15
WIC - Torrance County Public Health - Mountainair	Nutrition	384-2351	Mountainair	15
Workforce Connection of Central New Mexico	Work Programs	832-6774	Moriarty	30
YCC Summer Youth Employment	Work Programs	281-7655	Edgewood	30
Youth Health Advisory	Teens & Youth	384-2002	Estancia	28
YWCA Carino	Counseling / Psychiatric Services	254-9922	Albuquerque	8
YWCA Carino	Child Development	254-9922	Moriarty	6



## **Index by Service Category**

## March 2009 Service Directory

## SERVICES INDEX

Service Category	Page
Abuse and Neglect	1
Acupuncture	1
Aging and Disability	2
Agriculture	2
Assistance	2
Assistance - Financial	3
Assistance - Food	3
Assistance - Housing	4
Assistance - Medical	4
Assistance - Utilities	5
Child Abuse -- SEE Abuse and Neglect	1
Child Care Providers	5
Child Development	6
Childbirth	7
Chiropractic	7
Counseling / Psychiatric Services	7
Dental	9
Disability Agencies	9
Domestic Violence	10
Education - Advisement	11
Education - Vocational	11
Emergency Services	11
Home Health	11
Income Support & Medicaid Assistance	11
Judicial	12

Service Category	Page
Law Enforcement	13
Libraries	14
Literacy Programs	14
Medicaid Assistance	14
Nutrition	15
Obstetrics/ Gynecology	15
Pharmacy	15
Physical Therapy	16
Pregnancy	17
Pregnancy & Parenting	17
Primary Care	17
Psychiatric -- SEE COUNSELING	7
Public Health	19
Public Transportation	19
Schools	19
Senior Services	22
Substance Abuse Prevention Programs	23
Support Groups	23
Support Programs	26
Teens & Youth	27
Transportation - Medical	28
Transportation - Public	29
Vision	29
Work Programs	30

# Estancia Valley Area Service Directory

March 2009

Provider	Physical Address	Phone	Services	Days	Hours	Fee/Billing
<b>Abuse and Neglect</b>						
<b>Adult Protective Services</b>						
Aging & Long-Term Services		505-476-4912 1-866-654-3219	Adult Abuse	Call for Info.		Medicaid Fee Sliding Fee No Charge
<b>All Faiths Receiving Home</b>						
	1709 Moon St. NE Albuquerque NM 87112	271-0329	Serve kids who have been abused & their families; provide counseling & assist with other needs. Evening/ weekend appointments available.	Mon - Thur Fri, Sat	8:00 - 7:00 8:00 - 5:00	Medicaid X Fee Sliding Fee X No Charge X
<b>Amigas de La Familia</b>						
Torrance County Project Office	809 S 1st St., Suite A Moriarty NM 87035	832-0332	Child abuse and neglect prevention; Prenatal Classes, Home visiting, Postnatal Exercise Classes, Community Education. Bilingual	Mon - Thurs Extended Hrs. 2nd Tue Extended Hrs. 3rd Sat	7:30 - 5:30 7:30 - 7:00 8:00 - 12:00	Medicaid Fee Sliding Fee No Charge X
<b>CASA - Court Appointed Special Advocates</b>						
Rio Grande Valley CASA	11211 Old Rt. 66 Moriarty NM 87035	832-4217 1-866-338-4031	Volunteer advocacy for abused and neglected children involved in the court system.	By Appointment office - Mon-Thur	By Appointment 9:00-2:00	Medicaid Fee Sliding Fee No Charge X
<b>Children, Youth and Families Department</b>						
Foster-A-Future	300 San Mateo NE Albuquerque NM 87108	1-800-432-2075 505-841-2910	State Intake - Foster Parent Program	Mon - Fri	24 hrs.	Medicaid Fee Sliding Fee No Charge X
Protective Services	214 S. 5th St. Estancia NM 87016	384-2745 Hotline - 841-6100	Protective Services	Mon - Fri	8:00 - 5:00	Medicaid Fee Sliding Fee No Charge X
<b>Acupuncture</b>						
<b>Morgan Oriental Medicine</b>						
	2 Marietta Ct Ste C Edgewood NM 87015	281-9555	Acupuncture, Chinese Herbal Medicine -- Nationally Certified. Senior Discounts, all major credit cards accepted.	Tues, Thurs, Fri Wed	9:00 - 4:00 12:00 - 6:00	Medicaid Fee X Sliding Fee No Charge

# Estancia Valley Area Service Directory

March 2009

Provider	Physical Address			Phone	Services	Days	Hours	Fee/Billing	
<b>Aging and Disability</b>									
<b>Aging and Disability Resource Center</b>									
	2550 Cerrillos Rd Santa Fe	NM	87505	505-476-4710 1-800-432-2080	Adult Protective Services, Benefits counseling, D&E and MI VIA Waiver Registration, Prescription Drug Assistance, Community Services,	Call for Info.		Medicaid Fee Sliding Fee No Charge	
<b>Enchantment Legacy, Inc.</b>									
Adult Protective Services	514 W. Williams Ave Estancia	NM	87016	384-3032/ 2745 1-866-654-3219	Personal Care, Home Management, Transportation for medical appts. Income based eligibility assessment required. Homecare for Elderly &	Mon - Fri	8:00- 5:00- unless in field	Medicaid Fee Sliding Fee No Charge	X  X
<b>NM Aging and Long Term Services</b>									
NM Dept. of Human Services	1015 Tijeras Ave NW, Ste 200 Albuquerque	NM	87102	222-4500 222-4504	Referral for all issues of aging and for young families on assistance. Senior Olympics, HIV Advocate, Medicaid/ Medicare, and Indians Aging program	Mon - Fri	8:00 - 5:00	Medicaid Fee Sliding Fee No Charge	   X
<b>Agriculture</b>									
<b>Cooperative Extension Services</b>									
	205 9th and Allen Estancia	NM	87016	246-4745	Education Programs & Development	Mon - Thur	7:30 -5:30	Medicaid Fee Sliding Fee No Charge	   X
<b>Assistance</b>									
<b>Bethel Community Storehouse</b>									
	1719 4th st south Moriarty	NM	87035	832-6642	Emergency Assistance, Food, Clothes, Free nutrition classes Call for Information	Tues - Fri Sat Tues - Fri - Pantry	10:00 - 5:00 10:00 - 4:00 12:00 - 3:45	Medicaid Fee Sliding Fee No Charge	 X  X
<b>EVRAS - Estancia Valley Regional Animal Shelter</b>									
Torrance County Animal Services	85 Galloway Road Moriarty	NM	87035	832-9597 705-0024	Shelters animals and handles adoptions for Torrance County, Moriarty and Edgewood	Mon - Thur Fri - Sat	8:00 - 5:30 8:00 - 1.00	Medicaid Fee Sliding Fee No Charge	  X
<b>Mountainair Christian Alliance</b>									
Mountainair Christian Center	205 W Broadway Mountainair	NM	87036	847-2773	Gas assistance for transients. Assistance with utilities, food and gas for local residents.	Mon - Thurs	Before 4:00 p.m.	Medicaid Fee Sliding Fee No Charge	   X

# Estancia Valley Area Service Directory

March 2009

Provider	Physical Address			Phone	Services	Days	Hours	Fee/Billing
<b>New Mexico State Police</b>								
	Moriarty	NM	87035	281-0096 Emergency: dial 911	Travelers' Aide			Medicaid Fee Sliding Fee No Charge X
<b>Open Hands</b>								
	2976 Rodeo Park Dr. East Santa Fe	NM	87505	505-428-2320 1-800-396-4528	Adult Daycare, and Medical Equipment, Emergency Assistance Utilities/ Rent, Grab bars for 60 yrs and older installed Free.	Mon - Fri Telephone	8:00 - 5:00 Intake	Medicaid Fee Sliding Fee No Charge X
<b>St. Vincent de Paul Society</b>								
Estancia Valley Catholic Parish	3rd & Linden Moriarty	NM	87035	832-6655 384-4028 (Barbara)	Utility Cut-offs, Wood, Medication, Emergency Food	Wed	10:00 - 1:00 Call for Appt Walk-Ins OK	Medicaid Fee Sliding Fee No Charge X
Holy Child Catholic Parish	19 Camino del Santo Nino Tijeras	NM	87059	281-2297	Utilities and special food and clothing drives/ Home Visits as Well	Call for info		Medicaid Fee Sliding Fee No Charge X
St. Alice Catholic Parish	215 W Broadway Mountainair	NM	87036	847-0167	Assistance with utility bills and food; Can goods.	Mon - Wed Fri	8:30 - 3:00 10:00 - 4:00	Medicaid Fee Sliding Fee No Charge X
<b>Assistance - Financial</b>								
<b>Hope Now</b>								
				1-888-995-4673	Support and Guidance for Homeowners- mortgage renegotiation, foreclosure, credit counseling	Call for Information		Medicaid Fee Sliding Fee No Charge
<b>Assistance - Food</b>								
<b>East Mountain Pantry</b>								
	Corner of Route 66 & S NM Hwy 14 Tijeras	NM	87059	281-3342	Food pantry serving Tijeras area and east to County line. Food once/ month per family.	Tues Wed	9:00 - 1:00 4:00 - 6:00	Medicaid Fee Sliding Fee No Charge X
<b>Echo CSFP Program</b>								
	513 Williams Ave Estancia	NM	87016	242-6777	Monthly Food Packages for Kids who are not on WIC and Seniors, 3rd Monday	3rd Monday	10:00am - 12:00Pm	Medicaid Fee Sliding Fee No Charge X

# Estancia Valley Area Service Directory

March 2009

Provider	Physical Address		Phone	Services	Days	Hours	Fee/Billing
<b>Loaves and Fishes</b>							
	379 State Rd 344 Edgewood	NM 87015	379-7703 514-4427	Food distribution. 2nd & 4th Tuesday - 9:00am - -10:30am	Tuesday	9:00am - 10:30am	Medicaid Fee Sliding Fee No Charge X
<b>Moriarty Church of Nazarene</b>							
Mary Jimenez	1208 Poplar Moriarty	NM 87035	832-4390 620-0715	Food Pantry, call of days	anytime before 5:00 PM		Medicaid Fee  Sliding Fee No Charge X
<b>St. Vincent de Paul Society</b>							
Estancia Valley Catholic Parish	3rd & Linden St. Moriarty	NM 87016	832-6655 384-4028 (Barbara)	Food Pantry and Commodity Distribution	3rd Fri	9:00 - 12:00 Walk-in	Medicaid Fee Sliding Fee No Charge X
<b>Assistance - Housing</b>							
<b>Housing and Urban Development (HUD)</b>							
	107-1/2 Roosevelt Mountainair	NM 87036	847-2416	Rental Assistance for those within income eligibility. Police background check required to apply.		By Appointment	Medicaid Fee Sliding Fee No Charge X
<b>Assistance - Medical</b>							
<b>Indigent Funds</b>							
Torrance County	Estancia	NM 87016	249-4756	Help with Unpaid Medical Bills	Call for Information		Medicaid Fee Sliding Fee No Charge
<b>MedBank</b>							
Emergency Prescription Drug Assistance	2550 Cerillos Road Santa Fe	NM 87505	1-800-432-2080 505-476-4846	\$300.00 voucher for prescription drugs, Medicare Counseling, D & E Waiver	Mon - Fri	8:00 - 5:00	Medicaid Fee Sliding Fee No Charge X
<b>UNM Hospital Financial Services</b>							
UNM Care Program	Albuquerque	NM	272-2521 1-877-465-2368	UNM Care Program, Self-Pay Discount Program (for services obtained through UNM Hospital Health services only)	Call for Information		Medicaid Fee Sliding Fee No Charge

# Estancia Valley Area Service Directory

March 2009

Provider	Physical Address			Phone	Services	Days	Hours	Fee/Billing
<b>Assistance - Utilities</b>								
<b>LIHEAP</b>								
NM Human Services Department	109 Tulane St. Moriarty	NM	87035	832-5026	Utility Assistance	Mon - Fri	8:00 - 5:00	Medicaid Fee Sliding Fee No Charge X
<b>Open Hands</b>								
	Santa Fe	NM	87505	505-428-2320	Help with paying Utilities	Call for Information		Medicaid Fee Sliding Fee No Charge
<b>Child Abuse -- SEE Abuse and Neglect</b>								
								Medicaid Fee Sliding Fee No Charge
<b>Child Care Providers</b>								
<b>CYFD Child Care Services Bureau</b>								
				505-841-4813	Statewide Child Care Assistance	Call for Information		Medicaid Fee Sliding Fee No Charge
<b>Jelly Bean Junction</b>								
	900 Howard Cavasos Blvd. N Moriarty	NM	87035	832-6458	Child Care	Mon - Fri	6:30A - 6:30P	Medicaid Fee Sliding Fee No Charge X
<b>Loving Arms Day Care</b>								
	30A East Church St. Edgewood	NM	87015	281-8992	Child Care ages 2-12. One-time fee; will work with clients for payment arrangements	Mon - Fri	6:30A - 6:30P	Medicaid Fee Sliding Fee No Charge X
<b>Step-Up Child Care</b>								
	NM Hwy 217 South of Rte 66 Tijeras	NM	87059	286-4749	Child Care Ratio of 1-3. Ages Infants 6-8 weeks to 12 yrs. Expanding and hope to get new facility soon.	Mon - Fri	7:00 - 6:00	Medicaid Fee Sliding Fee No Charge X



# Estancia Valley Area Service Directory

March 2009

Provider	Physical Address		Phone	Services	Days	Hours	Fee/Billing		
<b>Child Development</b>									
<b>Alta Mira Specialized Family Services</b>									
	301 5th St. Estancia	NM	87016	384-0894	Child Development, Early Intervention, Respite	Mon - Fri	By Appointment only	Medicaid Fee  Sliding Fee No Charge	X X
<b>Earthchild</b>									
	4 Cedar Breaks Ct. Edgewood	NM	87015	281-2878	Preschool, Child Care & Montessori Program	Mon - Fri	7:00 - 6:00	Medicaid Fee Sliding Fee No Charge	X
<b>Head Start - Admin Office &amp; Estancia Center</b>									
Presbyterian Medical Services	600 10th St. Estancia	NM	87016	384-2302	Preschool Education Program	Mon - Fri	8:00 - 5:00	Medicaid Fee Sliding Fee No Charge	X
<b>Head Start - Moriarty Center</b>									
Presbyterian Medical Services	706 Union St. Moriarty	NM	87035	832-2588	Preschool Education Program	Mon - Fri	8:00 - 5:00	Medicaid Fee Sliding Fee No Charge	X
<b>Head Start - Mountainair Center</b>									
Presbyterian Medical Services	109 Sunset Mountainair	NM	87036	847-0547	Preschool Education Program/ Income eligible	Mon - Fri	8:00 - 5:00	Medicaid Fee Sliding Fee No Charge	X
<b>New Mexico Kids</b>									
NM Children, Youth & Families Department	1634 University Blvd NE Albuquerque	NM	87102	1-800-691-9067 277-7900-In Abq area	Child care resource & referral for families & child care professionals. Info on early childhood development & training.	Mon - Fri	8:00 - 5:00	Medicaid Fee Sliding Fee No Charge	X
<b>Sky Dancer Montessori School</b>									
	48 Horton Rd. South Edgewood	NM	87015	286-4077	Extended Care & Preschool. Volunteer/child care program for TANF recipients. Age 6 mos and up.	Mon - Fri	7:00 - 6:00	Medicaid Fee Sliding Fee No Charge	X X
<b>YWCA Carino</b>									
Moriarty Community Library	202 Broadway Moriarty	NM	87035	254-9922	Mobile Toy & Resource Van	2nd Wed	9:00 - 11:30	Medicaid Fee Sliding Fee No Charge	X

Provider	Physical Address			Phone	Services	Days	Hours	Fee/Billing	
<b>Childbirth</b>									
<b>Eden Birth &amp; Wellness</b>									
	Edgewood	NM	87015	281-1151	Childbirth, Home births, Clinic for Women's Health. Breastfeeding Classes.	Call for Appt.	Leave Message will call back	Medicaid Fee	
								Sliding Fee	No Charge
<b>Chiropractic</b>									
<b>Mountain Chiropractic &amp; Kinesiology</b>									
Randy Hutchins	12216 N Hwy 14 Cedar Crest	NM	87008	281-9090	Musculoskeletal, sports injuries, allergies, stress management, nutrition, TMJ, PMS	Mon Tues - Thurs Fri	10:00 - 12:00 <del>9:40 - 6:00</del> 2:20 - 9:40 - 4:00	Medicaid Fee	X
								Sliding Fee	No Charge
<b>Seibert Chiropractic</b>									
	12418 B Hwy 14N Cedar Crest	NM	87008	505-286-2861	Chiropractic care of musculo-skeletal and internal disorders	Mon - Fri	8:00 - 5:00	Medicaid Fee	X
								Sliding Fee	X No Charge
<b>Counseling / Psychiatric Services</b>									
<b>Conflict Management, Inc.</b>									
	7920 Mountain NE Albuquerque	NM	87110	884-9411	DWI assessments. In-home & office counseling including substance abuse, reintegration, domestic violence & parenting.	By Appointment	Day & Evening By Appointment	Medicaid Fee	X
								Sliding Fee	X No Charge
<b>Hogares Inc.</b>									
	1208 Route 66, Suite D Moriarty	NM	87035	832-9322	Children's Behavioral Health, in home and office services, behavioral case management	Mon - Fri	8:30 5:00	Medicaid Fee	X
								Sliding Fee	X No Charge
<b>Life Directions Counseling</b>									
	Moriarty Magistrate Court Moriarty	NM	87035	934-0603	Problem Identification & Referral	Go to Court	By Appointment	Medicaid Fee	X
								Sliding Fee	No Charge
<b>Mountain Community Counseling</b>									
	12064 N Hwy 14 Cedar Crest	NM	87008	281-9542	Alternative and Traditional Therapy, Hypnotherapy, Substance abuse therapy, and PTSD therapy	Wed., Fri Sat. Special Appts	9:00- 6:00 10:00- 3:00	Medicaid Fee	X
								Sliding Fee	X No Charge

# Estancia Valley Area Service Directory

March 2009

Provider	Physical Address	Phone	Services	Days	Hours	Fee/Billing
<b>Mustang Health Center</b>						
Mountainair High School	901 West 3rd Street Mountainair NM 87036	847-2211 x1019	Primary care and behavioral health services to staff and students of Mountainair schools	Mon, Wed Tues	7:30 - 1:00 7:30 - 4:30	Medicaid X Fee X Sliding Fee X No Charge
<b>PMS Esperanza Medical Center</b>						
	903 C 5th St. Estancia NM 87016	384-2777	Counseling & Psychiatric; Case management		By Appointment	Medicaid X Fee X Sliding Fee X No Charge
<b>PMS Mountainair Family Health Center</b>						
	105 E. Pinon St Mountainair NM 87036	847-2271	Counseling & Psychiatric		By Appointment	Medicaid X Fee X Sliding Fee X No Charge
<b>SunRise Counseling Services</b>						
	95 SR 344 Edgewood NM 87015	505-891-1001	Alcohol & Drug Abuse counseling, Drug & alcohol and Domestic Violence	Mon - Sat 24/7	By Apointment Crisis	Medicaid X Fee X Sliding Fee X No Charge
<b>Torrance County Counseling</b>						
	1701 Old Route 66, Suite D Moriarty NM 87035	832-9135 705-0246	Counseling/ Drug and Alcohol Testing/ Substance abuse counseling.	Mon - Sat	9:00 - 8:00	Medicaid X Fee X Sliding Fee X No Charge
<b>Trish Daino, Private Therapist</b>						
	All of Torrance County	803-7110 505-660-8626	In-home & office counseling: children, adults, couples, family, individual, teens, domestic violence, non-violence, women's empowerment	By Appointment	Day & Evening By Appointment	Medicaid X Fee X Sliding Fee X No Charge
<b>Valencia Counseling Services</b>						
	1011 Allen Street Estancia NM 87016	384-0220	Counseling; psycho-social rehabilitation	Mon - Fri Lunch	8:00 - 5:00 12:00 - 1:00	Medicaid X Fee X Sliding Fee X No Charge
<b>YWCA Carino</b>						
ABQ	210 Truman NE Albuquerque NM 87108	254-9922	Referral for child, family, & behavioral counseling. Guidance to obtain licensing as child care provider.	Mon - Fri	8:00 - 5:00	Medicaid X Fee X Sliding Fee X No Charge

**Provider                                      Physical Address                                      Phone                                      Services                                      Days                                      Hours                                      Fee/Billing**

## Counseling/ Psychiatric Services

### McKee Counseling Services

Jack McKee	1209 Rt 66 West, Suite A Moriarty NM 87035	505-407-6489	Adolescent counseling; Substance abuse counseling	Mon - Thur	9:00 - 5:00	Medicaid Fee Sliding Fee No Charge	X X X
------------	---	--------------	--	------------	-------------	--	-------------

## Dental

### Dr. David Stevens

	2006 Rte 66 West Moriarty NM 87035	832-5556	General Dentistry	Mon - Thurs	8:00 - 12:00 1:00 - 5:00	Medicaid Fee Sliding Fee No Charge	X
--	---------------------------------------	----------	-------------------	-------------	-----------------------------	--	---

### East Mountain Orthodontics

	1917 Old Route 66 Edgewood NM 87015	286-1193 293-0687	Full Orthodontics	Wed 2 x month call for appt.	8:30 - 12:00	Medicaid Fee Sliding Fee No Charge	X X
--	--	----------------------	-------------------	------------------------------------	--------------	--	--------

### Edgewood Family Dentistry

	1917 Old Route 66 Edgewood NM 87015	281-0373	General Dentistry	Mon - Thurs	9:00 - 5:00	Medicaid Fee Sliding Fee No Charge	X
--	--	----------	-------------------	-------------	-------------	--	---

### First Choice Community Healthcare

	8 Medical Center Road Edgewood NM 87015	281-3406	General Dentistry - Bilingual	Mon - Sat	8:00 - 5:00	Medicaid Fee Sliding Fee No Charge	X X X
--	--	----------	-------------------------------	-----------	-------------	--	-------------

### PMS Esperanza Medical Center

	903 C 5th St. Estancia NM 87016	384-2777	General Dentistry	Mon - Fri Lunch	8:00 - 5:00 12:30 - 1:30	Medicaid Fee Sliding Fee No Charge	X X X
--	------------------------------------	----------	-------------------	--------------------	-----------------------------	--	-------------

## Disability Agencies

### Alta Mira Specialized Family Services

	301 5th St. Estancia NM 87016	384-0894	Family DD Waiver services: Respite, Personal Support, and Family Living. Home visits available	Mon - Fri	By Appointment Only	Medicaid Fee Sliding Fee No Charge	X X
--	----------------------------------	----------	--	-----------	------------------------	--	--------

Provider	Physical Address			Phone	Services	Days	Hours	Fee/Billing	
<b>Division of Vocational Rehabilitation</b>									
State of New Mexico	105 Broadway	NM	87035	832-5038 1-888-901-7864	Assistance for persons with disabilities, mental or physical, to get back to work	Mon - Fri	8:00-12:00 1:00-5:00 By Appointment	Medicaid Fee Sliding Fee No Charge	X
<b>Independent Living Resource Center (ILRC)</b>									
	1208 Route 66	NM	87035	832-1128	Independent living skills training, advocacy and support services for People w/ Disabilities	Mon - Fri	8:00 - 11:00 12:00 - 3:00 By Appointment	Medicaid Fee Sliding Fee No Charge	X
<b>New Beginnings</b>									
	221 5th Estancia	NM	87016	384-1045	Dayhab for people with Developmental Disabilities, usually age 21 or older. No charge under the DD waiver	Mon - Fri Sat	8:00 - 4:30 Depends	Medicaid Fee Sliding Fee No Charge	X X X
<b>Protection &amp; Advocacy</b>									
Lily Martinez	1720 Louisana NE Ste 204	NM	87110	256-3100 1-800-432-4682	Legal rights for people with disabilities.	Mon - Fri	8:30 - 5:00	Medicaid Fee Sliding Fee No Charge	X
<b>Su Vida Services</b>									
	3150 Carlisle NE	NM	87110	830-6045	Support to East Mountain area for Medicaid approved family members w/ disabilities -- day activities; access to community services	Mon - Fri	8:30 - 4:30	Medicaid Fee Sliding Fee No Charge	X
<b>Domestic Violence</b>									
<b>Sanctuary Zone</b>									
Madrid Bail Bond Building	903 N 5th St Bldg B Ste 1&6	NM	87016	384-0381 384-3001	Assistance & referral for victims of domestic violence, gift shop, 12- step program	Mon - Sat	8:00 - 5:00	Medicaid Fee Sliding Fee No Charge	X X
<b>Torrance County Domestic Violence Program</b>									
Torrance County Project Office	809 S 1st St., Suite B	NM	87035	832-6567 705-0925	Victim Assistance; Emergency Services; Victim & Offender Counseling	Mon - Fri	8:00 - 5:00	Medicaid Fee Sliding Fee No Charge	X
<b>Trish Daino, Private Therapist</b>									
	All of Torrance County			803-7110 505-660-8626	In-home & office counseling: children, adults, couples, family, individual, teens, domestic violence, non-violence, women's empowerment	By Appointment	Day & Evening By Appointment	Medicaid Fee Sliding Fee No Charge	X X

Provider	Physical Address	Phone	Services	Days	Hours	Fee/Billing
<b>Education - Advisement</b>						
<b>University of New Mexico</b>						
Educational Opportunity Center	777 Old Route 66 Moriarty NM 87035	832-6774 249-7601	Student educational program advisement -- GED, college or community college, financial aid assistance	Mon - Thurs	8:00 - 1:00	Medicaid Fee Sliding Fee No Charge X
<b>Education - Vocational</b>						
<b>Plants of Thanksgiving</b>						
Agricultural/ Horticultural School	12 Crestview Lane Edgewood NM 87015	350-0595	Vocational and practical workshops and training	Call for Schedule	Call for Schedule	Medicaid Fee Sliding Fee No Charge X
<b>Emergency Services</b>						
<b>Torrance County Dispatch</b>						
	751 Salt Missions Trail McIntosh NM 87032	384-9631	Dispatch for County -- fire, law enforcement and EMS	Every day	24 hours	Medicaid Fee Sliding Fee No Charge X
<b>Torrance County Emergency Manager</b>						
	205 9th St. Estancia NM 87016	246-4748		Mon - Thurs Leave Message will call	7:30 - 5:30	Medicaid Fee Sliding Fee No Charge X
<b>Home Health</b>						
<b>Above All Personal Care Services, LLC</b>						
	2552 Hwy 41 Moriarty NM 87035	832-5553 281-4412	Home Healthcare and Personal Healthcare. DD Waiver & D&E Waiver. Adults 21 and over.	Mon - Fri Person on call 24/7	9:00 - 4:00	Medicaid Fee Sliding Fee No Charge X
<b>Income Support &amp; Medicaid Assistance</b>						
<b>NM Department of Human Services</b>						
Income Support Division	109 Tulane Moriarty NM 87035	832-5026 1-866-335-7293	Cash Assistance, Food Stamps, Emergency Food Assistance, Child Support Enforcement, LIHEAP, Medicaid	Mon - Fri	8:00 - 5:00	Medicaid Fee Sliding Fee No Charge X

Provider	Physical Address		Phone	Services	Days	Hours	Fee/Billing		
<b>Judicial</b>									
<b>7th Judicial District Court</b>									
	903 N 5th St. Estancia	NM	87016	384-2974	All types of court cases (I.e., divorce, guardianship, criminal, domestic violence, probate, etc.)	Mon - Fri	8:00 - 4:00	Medicaid Fee Sliding Fee No Charge	X  X
<b>Children, Youth and Families Department</b>									
New Mexico State Juvenile Justice Division	214 S. 5th St. Estancia	NM	87016	384-2780 Hotline 841-6100	Juvenile Probation and Parole	Mon - Fri 24 Hr Calls	8:00 - 5:00	Medicaid Fee Sliding Fee No Charge	  X
<b>Estancia Magistrate Court</b>									
Town of Estancia	903 N 5th Estancia	NM	87016	384-2926 832-4476	1st felony appearances, traffic and civil matters	Wed Thurs - Fri	8:00 - 4:00 8:00 - 4:00	Medicaid Fee Sliding Fee No Charge	  X
<b>Estancia Municipal Court</b>									
Town of Estancia	512 W Williams Estancia	NM	87016	384-0512	Traffic/ Ordinance Cases	Call for days	and times	Medicaid Fee Sliding Fee No Charge	  X
<b>Moriarty Magistrate Court</b>									
City of Moriarty	1100 Central Moriarty	NM	87035	832-4476	DWI, Traffic, Criminal, Domestic Violence, Bench Warrant, Civil Cases	Mon Tues - Fri	8:00 - 3:00 8:00 - 4:00	Medicaid Fee Sliding Fee No Charge	  X
<b>Moriarty Municipal Court</b>									
City of Moriarty	201 Broadway Moriarty	NM	87035	832-6354	Traffic offenses to 2nd DULs; court costs & fines	Mon - Fri	8:00 - 5:00	Medicaid Fee Sliding Fee No Charge	  X
<b>Torrance County District Attorney</b>									
	903 N 5th St. Estancia	NM	87016	384-2800		Mon - Fri Lunch	8:00 - 5:00 12:00 - 1:00	Medicaid Fee Sliding Fee No Charge	  X

Provider	Physical Address	Phone	Services	Days	Hours	Fee/Billing
<b>Law Enforcement</b>						
<b>Adult Probation and Parole</b>						
New Mexico State Corrections Department	809 S 1st St., Suite C Moriarty NM 87035	832-6832 835-1847	Supervision of probationers and parolees as ordered by the Courts and/or Probation Department	Mon - Fri	8:00 - 5:00	Medicaid Fee Sliding Fee No Charge X
<b>CYFD Underage Drinking Initiative</b>						
City of Moriarty	201 Broadway Moriarty NM 87035	832-4406	Enforcement of underage drinking laws	Mon - Fri	8:00 - 5:00	Medicaid Fee Sliding Fee No Charge X
<b>Edgewood Police Dept</b>						
	Edgewood NM 87015	281-1060	EMERGENCY: DIAL 911	Mon - Fri	8:00 - 5:00	Medicaid Fee Sliding Fee No Charge X
<b>Estancia Police Department</b>						
Town of Estancia	1000 Highland Estancia NM 87016	384-4282 emergency: dial 911	EMERGENCY: DIAL 911 or Dispatch at 384-2706	Mon - Fri Lunch	8:00 - 5:00 12:00 - 1:00	Medicaid Fee Sliding Fee No Charge X
<b>Moriarty Police Department</b>						
City of Moriarty	201 Broadway Moriarty NM 87035	832-6060 emergency: dial 911	EMERGENCY: DIAL 911 or Dispatch at 384-2705 or 384-2706	Mon - Fri	8:00 - 5:00	Medicaid Fee Sliding Fee No Charge X
<b>Mountainair Police Department</b>						
Town of Mountainair	107 N Roosevelt Mountainair NM 87036	847-2806 emergency: dial 911	EMERGENCY: DIAL 911 OR 847-2201	Mon - Fri	8:00 - 4:30	Medicaid Fee Sliding Fee No Charge X
<b>Torrance County Detention Facility</b>						
Corrections Corporation of America (CCA)	209 East Alan Ayers Estancia NM 87016	384-2711	Torrance County Detention Facility	Call for info Administrative Hrs Mon	8:00 - 5:00	Medicaid Fee Sliding Fee No Charge X
<b>Torrance County Sheriff</b>						
	205 9th St. (9th & Allen) Estancia NM 87016	246-4773 emergency: dial 911	Law enforcement and Compliance Monitoring. EMERGENCY: DIAL 911 or Dispatch at 384-2705/ 2706	Mon - Fri	8:00 - 5:00	Medicaid Fee Sliding Fee No Charge X



**Provider                                      Physical Address                                      Phone                                      Services                                      Days                                      Hours                                      Fee/Billing**

## Libraries

### East Mountain Library

#1 Old Tijeras Road Hwy 333 Tijeras NM 87059	281-8508 768-5140	Library/ Small fee for an internet access card	Tue, Wed, Fri, Sat Thurs	10:00 - 6:00 11:00 - 7:00	Medicaid Fee Sliding Fee No Charge	X
---	----------------------	--	-----------------------------	------------------------------	---	---

### Edgewood Community Library

95 Hwy 344 North Edgewood NM 87015	281-0138	Wireless internet 24/7 with 3 public access stations	Mon - Fri Sat	12:00 - 6:00 10:00 - 3:00	Medicaid Fee Sliding Fee No Charge	X
---------------------------------------	----------	--	------------------	------------------------------	---	---

### Estancia Public Library

Town of Estancia 600 S. Tenth St. Estancia NM 87016	384-9655	Audio library; 12 computers with internet; print, fax & copy; preschool story hour; summer reading program; mtg room; tax forms	Mon - Thurs Fri Sat	10:00 - 7:00 10:00 - 5:00 10:00 - 4:00	Medicaid Fee Sliding Fee No Charge	X
---	----------	---	---------------------------	--	---	---

### Moriarty Community Library

City of Moriarty 202 Broadway Moriarty NM 87035	832-2513	GED Classes, Books on Tape & CD, videos & DVDs, public access computers, Spanish language books, family & story times	Mon - Thur Fri Sat	9:00 - 7:00 9:00 - 5:00 9:00 - 3:00	Medicaid Fee Sliding Fee No Charge	X
---	----------	---	--------------------------	---	---	---

### Mountainair Library

109 N Roosevelt Mountainair NM 87036	847-9676	Call for Friday hours. Bookmobile 1 Thursday per month 9:00 - 4:00.	Mon - Wed Thurs Fri / Sat	9:00 - 12:00 9:00 - 12:00 2:00 - 10:00 - 3:00 / 9:00	Medicaid Fee Sliding Fee No Charge	X
---	----------	---	---------------------------------	--	---	---

## Literacy Programs

### Read "Write" Adult Literacy Program

Moriarty Community Library 902 Old Route 66 Moriarty NM 87035	832-9469	Basic Literacy, English as a Second Language, Computer Literacy, Life Skills	Mon - Fri Sat By Appointment	9:00 - 5:00 9:00 - 3:00	Medicaid Fee Sliding Fee No Charge	X
---	----------	--	------------------------------------	----------------------------	---	---

## Medicaid Assistance

### Torrance County Project Office

809 S 1st St., Suite A Moriarty NM 87035	832-0332	Medicaid & State Coverage Insurance enrollment assistance; Presumptive Eligibility determination. Bilingual.	Mon - Thurs Extended hours 2nd Tu Extended hours 3rd Sat	7:30 - 5:30 7:30 - 7:00 8:00 - 12:00	Medicaid Fee Sliding Fee No Charge	X
---	----------	--	--	--	---	---

Provider	Physical Address	Phone	Services	Days	Hours	Fee/Billing
<b>Torrance County Project Office Outreach</b>						
Mustang Health Center	901 West 3rd Street Mountainair NM 87036	832-0332	Medicaid & State Coverage Insurance enrollment assistance; Presumptive Eligibility determination	2nd Wed	11:00 - 1:00	Medicaid Fee Sliding Fee No Charge X
<b>Nutrition</b>						
<b>WIC - Torrance County Public Health - Estancia</b>						
State of NM Department of Health	300 S 8th St. Estancia NM 87016	384-2351 384-5005	WIC nutrition every Thurs, and Fri, except 2nd Thurs of the month	Mon - Fri Lunch	8:00 - 5:00 12:00 - 1:00 By Appointment	Medicaid Fee Sliding Fee No Charge X
<b>WIC - Torrance County Public Health - Moriarty</b>						
State of NM Department of Health	1110 Old Route 66 Moriarty NM 87035	832-6782	WIC nutrition Mon, Tues, Wed	Tues, Wed, Fri Lunch	8:00 - 5:00 12:00 - 1:00 By Appointment	Medicaid Fee Sliding Fee No Charge X
<b>WIC - Torrance County Public Health - Mountainair</b>						
State of NM Department of Health	903 W 3rd - High School Mountainair NM 87036	384-2351 832-6782	WIC nutrition 2nd Thurs. of the month	2nd Thurs of the month	8:30 - 5:00	Medicaid Fee Sliding Fee No Charge X
<b>Obstetrics/ Gynecology</b>						
<b>Julian F. Rowe, MD, MPH, FACOG</b>						
Judy Lui, MD, DOM	1950-C Old Route 66 Edgewood NM 87015	286-1900	Obstetrics/Gynecology/Chinese medicine	Thurs Lunch Wed afternoon	8:00 - 5:00 1:00 - 2:00 emergency (12:00)	Medicaid Fee Sliding Fee No Charge X X
<b>Pharmacy</b>						
<b>May's Pharmacy</b>						
	600 Central Route 66 Moriarty NM 87035	832-9988	Pharmacy	Mon - Thur Fri Sat	9:00 - 6:30 9:00 - 6:00 10:00 - 4:00	Medicaid Fee Sliding Fee No Charge X X X
<b>Mountainair Meds and More</b>						
	111 W Broadway Mountainair NM 87036	847-0242	Pharmacy	Mon - Fri	9:00-5:00	Medicaid Fee Sliding Fee No Charge X X

# Estancia Valley Area Service Directory

March 2009

Provider	Physical Address	Phone	Services	Days	Hours	Fee/Billing
<b>Smith's Pharmacy</b>						
	02-B NM Hwy 344 Edgewood NM 87015	286-9040	Pharmacy / \$4 Dollar Plan	Mon - Fri Sat Sun	9:00 - 9:00 9:00 - 7:00 10:00 - 6:00	Medicaid X Fee X Sliding Fee No Charge
<b>Walgreens Pharmacy</b>						
	5 Walker Rd. Edgewood NM 87015	281-0178	Pharmacy - drive-thru available	Mon - Fri Sat Sun	8:00A - 10:00P 9:00 - 6:00 10:00 - 6:00	Medicaid X Fee X Sliding Fee No Charge
<b>Walmart Pharmacy</b>						
	66 State Rd. Hwy 344 Edgewood NM 87015	286-3043 286-3053	Pharmacy - \$4 Dollar Plan	Mon - Fri Sat Sun	9:00 - 9:00 9:00 - 7:00 9:00 - 6:00	Medicaid X Fee X Sliding Fee No Charge
<b>Physical Therapy</b>						
<b>Active Solutions</b>						
Physical Therapy	#1 Linnie Court Edgewood NM 87015	286-7838	Physical Therapy/ Occupational Therapy	Mon Tue, Thur Wed / Fri	8:30 - 7:00 8:30 - 6:30 8:30 - 5:30/ 8:30 - 5	Medicaid X Fee X Sliding Fee No Charge
<b>East Mountain Physical Therapy</b>						
	2005-A Route 66 W. Moriarty NM 87035	832-4011 281-8463	Physical Therapy	Mon, Wed Fri	8:00 - 5:00 8:00 - 5:00	Medicaid X Fee X Sliding Fee No Charge
	12127 N Hwy 14, Ste B3 Cedar Crest NM	286-3678	Physical Therapy	Mon, Wed Fri	By Appointment	Medicaid X Fee X Sliding Fee No Charge
	8 George Ct., Suite A Edgewood NM 87015	281-8463	Physical Therapy	Mon, Tues Thurs	8:00 - 5:00 8:00 - 5:00	Medicaid X Fee X Sliding Fee No Charge
<b>Skyline Therapy Services</b>						
	1090 Mountain Valley Rd. Edgewood NM 87015	281-1811	Physical, Occupational and Speech Therapy - Specialize in Hypno Therapy - Salud Provider	Mon - Fri Closed for Lunch	8:00 - 5:00 12:00 - 1:00	Medicaid X Fee X Sliding Fee No Charge

Provider	Physical Address	Phone	Services	Days	Hours	Fee/Billing
<b>Pregnancy</b>						
<b>Torrance County Public Health - Estancia</b>						
State of NM Department of Health	300 S 8th St. Estancia NM 87016	384-2351 384-5005	Pregnancy testing, TB screening, family planning, child immunizations. Visit Mountainair 2nd Tuesday of month.	Mon - Fri Lunch	8:00 - 5:00 12:00 - 1:00 By Appointment	Medicaid X Fee X Sliding Fee X No Charge X
<b>Torrance County Public Health - Moriarty</b>						
State of NM Department of Health	1110 Old Route 66 Moriarty NM 87035	832-6782	Pregnancy testing, TB screening, family planning, child immunizations WIC and STD testing	Tues - Fri Lunch	8:00 - 6:00 12:00 - 1:00 By Appointment	Medicaid X Fee X Sliding Fee X No Charge X
<b>Pregnancy &amp; Parenting</b>						
<b>All Faiths Receiving Home</b>						
	1709 Moon St. NE Albuquerque NM 87112	271-0329	Home Visits for 1st-time parents of children ages birth to 3, pregnant women & adoptive parents. Case management.	Mon - Thur Fri	8:30 7:00 8:30 5:00	Medicaid X Fee Sliding Fee X No Charge X
<b>Care Net East Mountain Pregnancy Center</b>						
	150 NM Hwy 344, Suite K Edgewood NM 87015	281-5408 1-505-880-0882	Pregnancy Testing & Limited Ultrasounds, Education, Counseling, Parenting & Childbirth Classes, Material Assistance, Post abortive counseling	Mon -Thurs	1:30 - 5:30	Medicaid Fee Sliding Fee No Charge X
<b>Torrance County Project Office</b>						
Amigas de La Familia	809 S 1st St., Suite A Moriarty NM 87035	832-0332	Car Seats; Prenatal & Developmental classes; Medicaid, Presumptive Eligibility & State Coverage Insurance enrollment; Youth Development	Mon - Thurs	7:30 - 5:30	Medicaid Fee X Sliding Fee No Charge X
<b>Primary Care</b>						
<b>Edgewood Pediatric Clinic</b>						
	02 Eunice Ct., Bldg. B Edgewood NM 87015	281-4620	Primary Care, Pediatric Care	Mon - Thur Lunch Fri	9:00 - 5:00 1:00 - 2:00 9:00 - 12:00	Medicaid X Fee X Sliding Fee No Charge
<b>First Choice Community Healthcare</b>						
	8 Medical Center Road Edgewood NM 87015	281-3406	Primary Care, General Practice, Health Education, Laboratory Services, MAP - Bilingual	Mon - Thur Fri Sat	7:30 - 7:00 7:30 - 5:00 8:00 - 5:00	Medicaid X Fee X Sliding Fee X No Charge

# Estancia Valley Area Service Directory

March 2009

Provider	Physical Address	Phone	Services	Days	Hours	Fee/Billing
<b>McLeod Medical Center</b>						
	1108 Old Route 66 Moriarty NM 87035	832-4434 emergency 263-9509	Primary Care, Family Practice, DOT Physicals	Mon - Fri Sat	7:00 - 6:00 8:30 - 12:30	Medicaid X Fee X Sliding Fee No Charge
	3 George Ct., Suite C Edgewood NM 87015	286-2396	Primary Care, Family Practice, DOT Physicals	Mon - Fri Closed	8:00 - 5:00 12:00 - 1:00	Medicaid X Fee X Sliding Fee No Charge
	12127 B N. Hwy 14, Ste. 5 Cedar Crest NM 87008	505-281-2460	Primary Care, Family Practice, DOT Physicals	Mon - Fri Closed	8:00 - 5:00 12:00 - 1:00	Medicaid X Fee X Sliding Fee No Charge
<b>Mustang Health Center</b>						
Mountainair High School	901 West 3rd Street Mountainair NM 87036	847-2211 x1019	Primary care and behavioral health services to staff and students of Mountainair schools	Mon Tues	7:30 - 1:00 7:30 - 4:00	Medicaid X Fee X Sliding Fee X No Charge
<b>NM Primary Care &amp; Midwifery Services Inc.</b>						
	1841 Route 66, Ste B Edgewood NM 87015	286-3100	Primary Care and Midwifery	Mon - Fri Lunch	9:00 - 5:00 12:00 - 1:00	Medicaid X Fee X Sliding Fee No Charge
<b>Nurse Advice Line</b>						
Nurse Advice New Mexico		1-877-725-2552	FREE 24-hour Nurse Advice			Medicaid Fee Sliding Fee No Charge X
<b>PMS Esperanza Medical Center</b>						
	903 C 5th St. Estancia NM 87016	384-2777	Primary Care, Family Practice	Mon - Fri Lunch	8:00 - 5:00 12:30 - 1:30	Medicaid X Fee X Sliding Fee X No Charge
<b>PMS Mountainair Family Health Center</b>						
	105 E. Pinon St. Mountainair NM 87036	847-2271 emergency 272-2111	Primary Care, General Practice	Mon - Fri Lunch	8:30 - 5:00 12:00 - 1:30	Medicaid X Fee X Sliding Fee X No Charge

**Provider                                      Physical Address                                      Phone                                      Services                                      Days                                      Hours                                      Fee/Billing**

**Psychiatric -- SEE COUNSELING**

Medicaid  
Fee  
Sliding Fee  
No Charge

**Public Health**

**Torrance County Public Health - Estancia**

State of NM Department of Health	300 S 8th St. Estancia	NM	87016	384-2351 384-5005	Nutrition, pregnancy testing, TB screening, family planning, child immunizations. Visit Mountainair 2nd Tuesday of month. STD & Disease	Mon - Fri Lunch	8:00 - 5:00 12:00 - 1:00 By Appointment	Medicaid Fee Sliding Fee No Charge	X X X X
----------------------------------	---------------------------	----	-------	----------------------	---	--------------------	---	---	------------------

**Torrance County Public Health - Moriarty**

State of NM Department of Health	1110 Old Route 66 Moriarty	NM	87035	832-6782	Nutrition, pregnancy testing, TB screening, family planning, child immunizations	Tues - Fri Lunch	8:00 - 6:00 12:00 - 1:00 By Appointment	Medicaid Fee Sliding Fee No Charge	X X X X
----------------------------------	-------------------------------	----	-------	----------	--	---------------------	---	---	------------------

**Public Transportation**

**Smart Choice Ride**

Torrance Co. DWI Program & TCPO TO GO				505-705-0332 505-832-0332	Designated Driving Service for Moriarty & Estancia area	Fri & Sat	Evenings	Medicaid Fee Sliding Fee No Charge	X
--	--	--	--	------------------------------	---	-----------	----------	---	---

**Schools**

**East Mountain High School**

	25 La Madera Road Sandia Park	NM	87047	281-7400 281-4173	Charter School, grades 9-12	Mon - Fri	8:00 - 4:00	Medicaid Fee Sliding Fee No Charge	X X
--	----------------------------------	----	-------	----------------------	-----------------------------	-----------	-------------	---	--------

**Edgewood Christian School**

Edgewood Believers Fellowship	87 NM Hwy 344 Edgewood	NM	87015	281-5091 286-8344	Christian School, age 4 Kindergarten - Grade 8	Mon - Fri	8:00 - 4:00	Medicaid Fee Sliding Fee No Charge	X
-------------------------------	---------------------------	----	-------	----------------------	--	-----------	-------------	---	---

# Estancia Valley Area Service Directory

March 2009

Provider	Physical Address	Phone	Services	Days	Hours	Fee/Billing	
<b>Edgewood Elementary School</b>							
Moriarty Municipal Schools	285 Dinkle Rd. Edgewood	NM 87015	832-5740	Public Education, Grades Pre-6	Mon - Fri	8:55 - 3:30	Medicaid Fee Sliding Fee No Charge X
<b>Edgewood Middle School</b>							
Moriarty Municipal Schools	17 Venus Rd. Edgewood	NM 87015	832-5880	Public Education, Grades 7-8	Mon - Fri	8:24 - 3:34	Medicaid Fee Sliding Fee No Charge X
<b>Estancia High School</b>							
Estancia Municipal School District	709 West Hopewell Estancia	NM 87016	384-2002	Public Education, Grades 9-12	Mon - Fri	8:00 - 4:00	Medicaid Fee Sliding Fee No Charge X
<b>Estancia Lower Elementary School</b>							
Estancia Municipal School District	119 North 7th Estancia	NM 87016	384-2005	Public Education, Grades K-1	Mon - Fri	8:10 - 3:00	Medicaid Fee Sliding Fee No Charge X
<b>Estancia Middle School</b>							
Estancia Municipal School District	709 West Hopewell Estancia	NM 87016	384-2003	Public Education, Grades 7-8	Mon - Fri	8:00 - 4:00	Medicaid Fee Sliding Fee No Charge X
<b>Estancia Municipal School District</b>							
Estancia Municipal School District	300 N 7th Street Estancia	NM 87016	384-2000	Superintendent	Mon - Fri	8:00 - 4:00	Medicaid Fee Sliding Fee No Charge X
<b>Estancia Upper Elementary School</b>							
Estancia Municipal School District	300 North 7th Estancia	NM 87016	384-2004	Public Education, Grades 3-6	Mon - Fri	8:00 - 4:00	Medicaid Fee Sliding Fee No Charge X
<b>Estancia Valley Learning Center</b>							
Estancia High School	602 West Hopewell Estancia	NM 87016	384-2002 Alan Carson	Nontraditional Secondary Education 9th Grade-Adult	Mon, Wed, Fri Tues, Thurs	8:00 - 4:00 8:00 - 7:00	Medicaid Fee Sliding Fee No Charge X

# Estancia Valley Area Service Directory

March 2009

Provider	Physical Address	Phone	Services	Days	Hours	Fee/Billing
<b>Liberty Ranch School</b>						
Liberty Ranch Church	#3 Hwy 55 Bluegrass Rd. Estancia NM 87016	384-2530	Private Education, Grades K-12	Tue - Fri	9:30 - 5:00	Medicaid Fee X Sliding Fee No Charge
<b>Moriarty Elementary School</b>						
Moriarty Municipal School District	2015 School Loop Moriarty NM 87035	832-4927	Public Education, Grades Special Needs Preschool-6	Mon - Fri	8:00 - 4:00	Medicaid Fee Sliding Fee No Charge X
<b>Moriarty High School</b>						
Moriarty Municipal School District	200 Center St. Moriarty NM 87035	832-4254	Public Education, Grades 9-12	Mon - Fri	7:45 - 3:45	Medicaid Fee Sliding Fee No Charge X
<b>Moriarty Middle School</b>						
Moriarty Municipal Schools	200 Center St.. Moriarty NM 87035	832-6200	Public Education, Grades 7-8	Mon - Fri	8:00 - 3:00	Medicaid Fee Sliding Fee No Charge X
<b>Moriarty Municipal School District</b>						
	200 Center Ave. Moriarty NM 87035	832-4471 832-5900	Superintendent	Mon - Fri	8:00 - 5:00	Medicaid Fee Sliding Fee No Charge X
<b>Mountainair Elementary School</b>						
Mountainair School District	405 W Broadway Mountainair NM 87036	847-2231	Public Education, Grades Preschool-5th	Mon - Fri	8:00 - 3:30	Medicaid Fee Sliding Fee No Charge X
<b>Mountainair High School</b>						
Mountainair School District	903 W 3rd Mountainair NM 87036	847-2211 847-2480	Public Education, Grades 6-12	Mon - Fri	8:00 - 3:30	Medicaid Fee Sliding Fee No Charge X
<b>Mountainair School District</b>						
	512 N Ross Mountainair NM 87036	847-2333	Superintendent	Mon - Fri	8:00 - 4:30	Medicaid Fee Sliding Fee No Charge X



# Estancia Valley Area Service Directory

March 2009

Provider	Physical Address	Phone	Services	Days	Hours	Fee/Billing
<b>Mountainview Elementary School</b>						
Moriarty Municipal Schools	2422 Old Route 66 Moriarty NM 87035	832-6827	Public Education, Grades Preschool-6	Mon - Fri	7:30 - 4:00	Medicaid Fee Sliding Fee No Charge X
<b>New Beginnings Christian Academy</b>						
Mountainair Christian Center	205 W. Broadway Mountainair NM 87036	847-2773	Christian School, grades K-12	Mon - Thurs	7:00 - 4:15	Medicaid Fee Sliding Fee No Charge X
<b>Prince of Peace Lutheran School</b>						
Prince of Peace Lutheran Church	12121 N NM Hwy 14 Cedar Crest NM 87008	281-6833 281-2430	Christian Education, Pre-school - Grade 8	Mon - Fri	8:30 - 4:00	Medicaid Fee Sliding Fee No Charge X
<b>Route 66 Elementary School</b>						
Moriarty Municipal Schools	805 Barton Rd. Edgewood NM 87015	832-5760	Public Education, Grades Prschool-6	Mon - Fri	8:00 - 4:00	Medicaid Fee Sliding Fee No Charge X
<b>South Mountain Elementary School</b>						
Moriarty Municipal Schools	577 NM Hwy 344 Edgewood NM 87015	832-5700	Public Education, Grades Preschool-5	Mon - Fri	8:00 - 4:00	Medicaid Fee Sliding Fee No Charge X
<b>Van Stone Elementary School</b>						
Estancia Municipal School District	809 West Joseph Estancia NM 87016	384-2005	Public Education, Grade 2	Mon - Fri	8:00 - 4:00	Medicaid Fee Sliding Fee No Charge X
<b>Senior Services</b>						
<b>Edgewood Senior Center</b>						
Santa Fe County	114 Quail Trail Edgewood NM 87015	281-2515	Senior Services, Classes in Ceramics, Leatherwork, Fine Arts & Open Crafts. \$1.50 lunches.	Mon - Fri	8:00 - 4:00	Medicaid Fee Sliding Fee No Charge X
<b>Estancia Senior Center</b>						
Presbyterian Medical Services	305 E Highland Estancia NM 87106	384-5010	Services for eligible seniors 60 and older: \$1.50 lunches (homebound also available); transportation services	Mon - Fri	9:00 - 2:00	Medicaid Fee Sliding Fee No Charge X

Provider	Physical Address	Phone	Services	Days	Hours	Fee/Billing
<b>McIntosh Senior Center</b>						
	E. Willow Lake Rd. A71 McIntosh NM 87032	384-3064	Senior Services, Meals. Arts & Crafts, Painting and Quilting classes to start in March 2007.	Mon - Fri	10:00 - 2:00	Medicaid Fee X Sliding Fee No Charge X
<b>Moriarty Senior Center</b>						
Presbyterian Medical Services	120 Roosevelt Ave. Moriarty NM 87035	832-4425	Services for eligible seniors 60 and older: \$1.50 lunches (homebound also available); transportation services	Mon - Fri	9:00 - 2:00	Medicaid Fee X Sliding Fee No Charge
<b>Mountainair Senior Center</b>						
	107 North Summit Mountainair NM 87036	847-2885	Services for eligible seniors 60 and older. \$1.50 lunches (homebound also available); transportation services	Mon - Fri	9:00 - 2:00	Medicaid Fee X Sliding Fee No Charge
<b>Substance Abuse Prevention Programs</b>						
<b>DWI Memorial of Perpetual Tears</b>						
Information	600 Broadway Moriarty NM 87035	832-4495 832-4614	NM National DWI Victims' Memorial; Victim Impact Panel information	Mon - Fri	8:00 - 5:00	Medicaid Fee X Sliding Fee No Charge X
<b>Substance Abuse Prevention Task Force</b>						
Partnership for a Healthy Torrance County	809 S 1st St., Suite A Moriarty NM 87035	832-0332	Community-based coalition for substance abuse prevention	Mon - Thurs Call for meeting times	7:30 - 4:30	Medicaid Fee X Sliding Fee No Charge X
<b>Torrance County DWI Program</b>						
	205 9th St. Estancia NM 87016	246-4774	DWI Prevention Programs. One-person office -- PLEASE LEAVE MESSAGE; WILL CALL BACK	Call for Appt	Will call back	Medicaid Fee X Sliding Fee No Charge X
<b>Support Groups</b>						
<b>AA Alcoholics Anonymous</b>						
Sts. Peter & Paul Catholic Church Rectory	9th & St. Joseph Estancia NM 87016	266-1900 266-3688 (Spanish)	12-Step Program	Thurs	7:00 PM	Medicaid Fee X Sliding Fee No Charge X

# Estancia Valley Area Service Directory

March 2009

Provider	Physical Address			Phone	Services	Days	Hours	Fee/Billing
<b>AA Assistance</b>								
Assistance				266-1900 266-3688 (Spanish)	Directory/Assistance/ Sell AA material	Sun - Sat Live person through the night	8:00- 10:00 10:00 pm- 8:00 am	Medicaid Fee Sliding Fee No Charge X
<b>AA Came to Believe</b>								
Madrid Bail Bonds	South of Judicial Complex Estancia	NM	87016	266-1900 266-3688 (Spanish)	12-Step Program	Tues	7:00 PM	Medicaid Fee Sliding Fee No Charge X
<b>AA Cedar Crest</b>								
Mountainside Methodist Church	4 Penny Lane Cedar Crest	NM	87008	266-1900 266-3688 (Spanish)	12-Step Program	Tues	7:00 PM	Medicaid Fee Sliding Fee No Charge X
<b>AA Edgewood Valley Group</b>								
Valley View Christian Church	170 NM Hwy 344 Edgewood	NM	87015	266-1900 266-3688 (Spanish)	12-Step Program	Fri	8:00 PM	Medicaid Fee Sliding Fee No Charge X
<b>AA Estancia Valley Group</b>								
Church of Christ	Irene & Eunice 211 Irene street Moriarty	NM	87035	266-1900 266-3688 (Spanish)	12-Step Program	Tues	7:00 PM	Medicaid Fee Sliding Fee No Charge X
<b>AA McIntosh Group</b>								
McIntosh Senior Center	NM Hwy 41 & Cty Rd. A71 McIntosh	NM	87032	266-1900 266-3688 (Spanish)	12-Step Program	Tues	7:00 PM	Medicaid Fee Sliding Fee No Charge X
<b>AA Mountainair Group</b>								
Mountainair Methodist Church	Sunset & 3rd Mountainair	NM	87036	266-1900 266-3688 (Spanish)	12-Step Program	Tues	6:30 PM	Medicaid Fee Sliding Fee No Charge X
<b>AA New Beginnings</b>								
Estancia	Building B, 903 N 5th St. Estancia	NM	87016	266-1900 266-3688	12-Step Program	Fri	8:00 PM	Medicaid Fee Sliding Fee No Charge X

# Estancia Valley Area Service Directory

March 2009

Provider	Physical Address	Phone	Services	Days	Hours	Fee/Billing
<b>AA Old 66 Group</b>						
Christ Unity Church	#3 Deanna Lane Edgewood NM 87015	266-1900 266-3688 (Spanish)	12-Step Program	Mon, Wed	7:00 PM	Medicaid Fee Sliding Fee No Charge X
<b>AA Spanish Group</b>						
Sts. Peter & Paul Catholic Church Hall	101 S. 9th St. Estancia NM 87016	266-3688 (Spanish) 266-1900	12-Step Program for Spanish speakers	Thurs	7:00 PM	Medicaid Fee Sliding Fee No Charge X
<b>AA Tijeras High Country Group</b>						
Holy Child Catholic Church	19 Camino del Santo Nino Tijeras NM 87059	266-1900 266-3688 (Spanish)	12-Step Program	Sun	7:00 PM	Medicaid Fee Sliding Fee No Charge X
<b>AA Valley Girls (women only)</b>						
Madrid Bail Bonds	Estancia NM 87016	266-1900 266-3688 (Spanish)	12-Step Program	Tues	7:00 PM	Medicaid Fee Sliding Fee No Charge X
<b>AI-Anon Fix On Route 66 AF Group</b>						
Good Shepherd Lutheran Church	Route 66 & Entrada del Norte Edgewood NM 87015	281-2013 262-2177	Support for families and friends of alcoholics	Sun Thur	4:00 PM 7:00	Medicaid Fee Sliding Fee No Charge X
<b>AI-Anon High Country AF Group</b>						
United Methodist Church	4 Penny Lane Cedar Crest NM 87008	262-2177 243-6135 (Spanish)	Support for families and friends of alcoholics	Fri	10:00 am	Medicaid Fee Sliding Fee No Charge X
<b>AI-Anon How It Works AF Group</b>						
United Methodist Church	4 Penny Lane Cedar Crest NM 87008	281-5117 243-6135 (Spanish)	Support for families and friends of alcoholics	Tues	7:00 PM	Medicaid Fee Sliding Fee No Charge X
<b>Alateen</b>						
Information	9004 Menaul NE Suite 12 Albuquerque NM 87112	262-2177	Substance Abuse, Prevention Support for friends and families of alcoholics.	24hrs		Medicaid Fee Sliding Fee No Charge X

# Estancia Valley Area Service Directory

March 2009

Provider	Physical Address	Phone	Services	Days	Hours	Fee/Billing
<b>Cocaine Anonymous</b>						
Information		291-3888 344-9828	12 Step Program To Talk to A Member Immediately call 907-5310	24hours		Medicaid Fee Sliding Fee No Charge X
<b>Gamblers Anonymous</b>						
Information		260-7272 260-7273	12-Step Program	Call for Meeting Places and Times	Look on-line	Medicaid Fee Sliding Fee No Charge X
<b>Narcotics Anonymous</b>						
Information		260-9889	12-Step Program. TO SPEAK WITH A RECOVERING ADDICT IMMEDIATELY, CALL 260-7195.	Call for Meeting Places and Times		Medicaid Fee Sliding Fee No Charge X
<b>Narcotics Anonymous Last Rights Group</b>						
Grace Baptist Church	I 40 E to Edgewood, 4 mi E on 66 Moriarty NM 87035	260-9889	12-Step Program. TO SPEAK WITH A RECOVERING ADDICT IMMEDIATELY, CALL 260-7195.	Mon, Wed, Fri	7:15 PM	Medicaid Fee Sliding Fee No Charge X
<b>Overeaters Anonymous</b>						
Information	6075 Zenith Court Rio Rancho NM 87174	292-9080 891-2664	12-Step Program	Mon - Fri	8:00 - 4:30	Medicaid Fee Sliding Fee No Charge X
<b>Weight Watchers</b>						
Bethel United Methodist Church	Rte 66 1-1/2 m. W of Moriarty Moriarty NM 87035	1-800-651-6000	Weight loss and prevention support	Tues Check-in	6:00 PM 5:40 PM	Medicaid Fee Sliding Fee No Charge X
Emanuel Baptist Church	19 Salt Mission Trail, Hwy 41 Estancia NM 87016	1-800-651-6000	Weight loss and prevention support	Mon	6:00 PM	Medicaid Fee Sliding Fee No Charge X
<b>Support Programs</b>						
<b>Partnership for a Healthy Torrance County</b>						
	809 S 1st St., Suite A Moriarty NM 87035	832-0332	Community Health Improvement Council, Community Assessment & Planning; Access to Community Services; Resource Development	Mon - Thurs Call for meeting information	7:30 - 5:30	Medicaid Fee Sliding Fee No Charge X

Provider	Physical Address		Phone	Services	Days	Hours	Fee/Billing
<b>Torrance County Project Office</b>							
	809 S 1st St., Suite A Moriarty	NM 87035	832-0332	Information & Referral; Car Seats; Medicaid & State Coverage Insurance; Youth Development; Child Abuse; Domestic Violence; Transportation	Mon - Thurs Call for extended hours	7:30 - 5:30	Medicaid Fee Sliding Fee No Charge X
<b>Vital Statistics</b>							
	Santa Fe	NM 87505	505-827-0121	State of NM Birth, Marriage, and Death Certificates	Call for Information		Medicaid Fee Sliding Fee No Charge X
<b>Teens &amp; Youth</b>							
<b>Drug Free TRES Program</b>							
Moriarty School District Area 4-12th grades	200 Center St. Moriarty	NM 87035	832-4471	Education and Prevention Programs, Special Education Children	Mon - Fri Call for info	8:00-4:00	Medicaid Fee Sliding Fee No Charge X
<b>Eagles Wings Youth Ranch</b>							
	514 North Manzano Ave. Mountainair	NM 87036	847-0062	Spiritually based free camp, follow-up and education program for at-risk youth	Mon - Fri	9:00 - 5:00	Medicaid Fee Sliding Fee No Charge X
<b>Estancia Teens Need Teens (TNT)</b>							
Estancia Municipal Schools	801 Hopewell Estancia	NM 87016	384-2003 384-2351	Meet at Estancia Middle School once a month plus one activity per month. Meet weekly in summer for 5 weeks. Call for dates and times.	Mon - Fri	9:00 - 2:00	Medicaid Fee Sliding Fee No Charge X
<b>Estancia TOP</b>							
Torrance County Project Office	513 Williams Estancia	NM 87016	384-1092 832-0332	Teen Outreach Program - youth development and adolescent pregnancy prevention; community service learning.	Mon - Fri TOP Sessions	1:00 - 5:00 3:30 - 5:00	Medicaid Fee Sliding Fee No Charge X
<b>Santa Fe County 4-H Clubs</b>							
Santa Fe County Extension Office	3229 Rodeo Rd. Santa Fe	NM 87507	1-505-471-4711	Life skills development projects, ages 5- 19. Los Amigos (Edgewood) 286-3802, Edgewood Chaparrals 286-0519, Stanley Wrestlers 470-3819	Mon - Fri Closed for Lunch Call for info & locations	8:00 - 5:00 12:00 - 1:00	Medicaid Fee Sliding Fee No Charge X
<b>Schools to Career / Work Program</b>							
Estancia High School	602 Hopewell Estancia	NM 87016	384-2002 Alan Carson	Work Experience Program	Mon - Fri Call for info	8:00 - 4:00	Medicaid Fee Sliding Fee No Charge X

# Estancia Valley Area Service Directory

March 2009

Provider	Physical Address		Phone	Services	Days	Hours	Fee/Billing		
<b>Talking Talons Youth Leadership Program</b>									
	754 Route 66 Tijeras	NM	87059	604-0098	Education & Prevention Programs; TUPAC Contractor	Mon - Fri Call for info	9:00 - 5:00	Medicaid Fee Sliding Fee No Charge	X
<b>The Loft Teen Ministry</b>									
1st Baptist Church of Moriarty	413 W. Irene St Moriarty	NM	87035	832-6385	Free Food, Video Games, Fun and Friendship Grades 7 thru 12.	Friday Nights	6:00 - 10:00	Medicaid Fee Sliding Fee No Charge	X
<b>Torrance County 4-H Clubs</b>									
Cooperative Extension Services	205 9th and Allen Estancia	NM	87016	246-4745	Youth Groups in Mountainair, Torreon, Estancia, McIntosh & Moriarty. All of Torrance County.	Mon - Thurs Call for info	7:30 - 5:30	Medicaid Fee Sliding Fee No Charge	X
<b>Torrance County Teen Court</b>									
Moriarty Magistrate Court	Moriarty	NM	87035	832-4424 Lori LeMoine	Teen Court		By Appointment	Medicaid Fee Sliding Fee No Charge	X
<b>Youth Health Advisory</b>									
Estancia Municipal School District	602 Hopewell Estancia	NM	87016	384-2002	Youth Leadership Program, Violence Prevention and Alcohol Awareness Program	Mon - Fri Call for info	8:00 - 4:00	Medicaid Fee Sliding Fee No Charge	X
<b>Transportation - Medical</b>									
<b>Access2Care</b>									
				1-888-939-2273 1-866-410-0002	Medicaid Transportation for Amerigroup.			Medicaid Fee Sliding Fee No Charge	X
<b>Integrated Transportation Management (ITM)</b>									
Molina Healthcare	1345 E Main St., Ste 200 Mesa	AZ	85203	1-888-593-2052	Transportation for Molina Salud	Mon - Fri	7:00 - 5:00	Medicaid Fee Sliding Fee No Charge	X
<b>Logisticare</b>									
	Phoenix	Az		1-866-913-4346	Medicaid Transportation for Evercare.			Medicaid Fee Sliding Fee No Charge	X

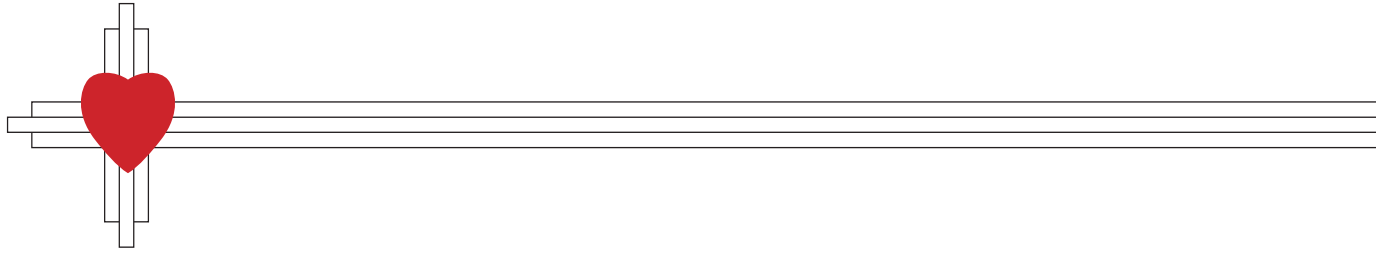
# Estancia Valley Area Service Directory

March 2009

Provider	Physical Address	Phone	Services	Days	Hours	Fee/Billing
<b>Safe Ride</b>						
	1903 B Edith Blvd. NE Albuquerque NM 87102	1-800-797-7433 255-4238	Presbyterian Salud, NM Medicaid, Private Pay	7 days/week	24 Hrs.	Medicaid X Fee X Sliding Fee X No Charge
<b>Superior Medical Transportation</b>						
	Albuquerque NM	1-877-735-0111 341-0042 (Alb Area)	Lovelace Salud--Call 48 hrs in advance.	Mon - Fri Call for info	24 Hrs.	Medicaid X Fee Sliding Fee No Charge
<b>TCPO TO GO Transportation</b>						
Torrance County Project Office	809 S 1st St., Suite A Moriarty NM 87035	832-0332	Transportation to Medical Appointments -- Call to Schedule	Mon - Fri	7:00 - 5:30	Medicaid X Fee X Sliding Fee No Charge
<b>Transportation - Public</b>						
<b>TCPO TO GO Transportation</b>						
Torrance County Project Office	809 S 1st St., Suite A Moriarty NM 87035	832-0332	TANF, Public Fixed-Route, Seniors, Personal Business, Shopping, Work, School, Prescription Pick-Up	Mon - Fri Call for info	7:30 - 5:30	Medicaid X Fee X Sliding Fee X No Charge
<b>Vision</b>						
<b>Cedar Crest Vision</b>						
	12220 Hwy N 14 Suite 3 Cedar Crest NM 87008	286-0300	Complete Vision	Mon Tues - Fri Sat	9:00 - 3:00 Closed 8:00 - 2:00 Closed f 8:30 - 3:00 Closed f	Medicaid X Fee X Sliding Fee No Charge
<b>East Mountain Eye Clinic</b>						
P. Dulce Walker, O.D.	1917 Old Route 66 Edgewood NM 87015	286-2020	Complete Eye Care	Mon - Thur Lunch	8:00 - 5:00 12:30 - 2:00	Medicaid X Fee X Sliding Fee No Charge
<b>Walmart Eye Center</b>						
	66 State Rd. Hwy 344 Edgewood NM 87015	286-3043 286-3119	Eye exams/ Contacts/ Glasses	Mon - Sat Sun	9:00- 8:00 12:00 - 5:00	Medicaid X Fee X Sliding Fee No Charge



Provider	Physical Address	Phone	Services	Days	Hours	Fee/Billing
<b>Work Programs</b>						
<b>Forest Guild YCC Summer Youth Employment</b>						
Mountainair High School	903 W 3rd street Mountainair NM 87036	847-2211	Summer employment for area youth in conservation	Mon- Fri	8:00- 5:00	Medicaid Fee Sliding Fee No Charge X
Mountainair Ranger District	#40 Ranger Station Rd. Mountainair NM 87036	847-2990	Summer employment for area youth in range and wildlife conservation	Mon - Fri	8:00 - 4:30	Medicaid Fee Sliding Fee No Charge X
<b>Torrance Works Career Center</b>						
	109 Tulane Moriarty NM 87035	832-5640	Job Skills Training, Job Resource Room, TANF and Food Stamps, CYFD Child Care, HSD application forms	Mon - Fri	8:00 - 5:00	Medicaid Fee Sliding Fee No Charge X
<b>Workforce Connection of Central New Mexico</b>						
State of NM Department of Labor	777 Old US Route 66 Moriarty NM 87035	832-6774	Adult & Youth Programs: Job Search, Job Skills Training, G.E.D.	Mon - Fri	8:00 - 5:00	Medicaid Fee Sliding Fee No Charge X
<b>YCC Summer Youth Employment</b>						
Wildlife West	87 N. Frontage Rd Edgewood NM 87015	281-7655 1-877-981-9453	Summer employment for area youth in conservation and/or community improvement projects	Mon - Sun	10:00 - 6:00	Medicaid Fee Sliding Fee No Charge X



**To update your contact information:  
Phone the Torrance County Project Office at 832-0332.**

**For additional copies of the directory please visit  
our website to download the document for printing.**

**[www.tcponm.com](http://www.tcponm.com)**

**Go to the Information and Referral page and click on the link  
for the Provider Directory.**